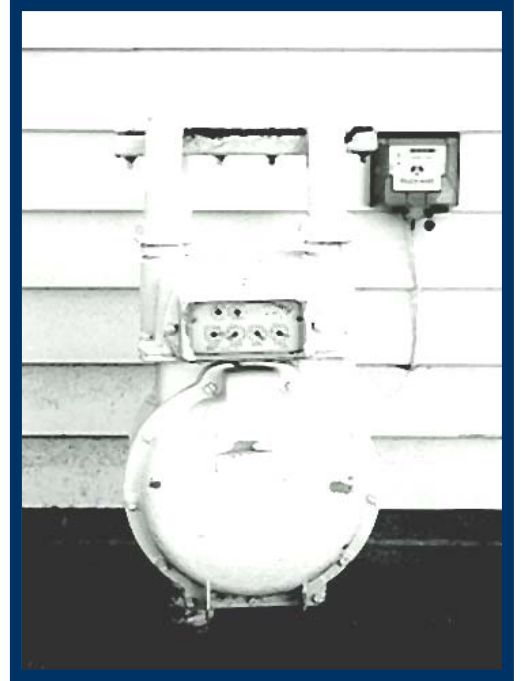


Reading Your Gas Meter

Actually, meter reading is easy to learn. Residential and small commercial accounts have meters with four dials. The meter is read from left to right. Two dials are read clockwise and the others are read counterclockwise.

1. The first dial is the one million dial and is read counterclockwise and this dial will move one point when the 100 thousand dial has made one complete revolution.
2. The second dial is the 100 thousand dial and is read clockwise and this dial will move one point when the 10 thousand dial has made one complete revolution. When this dial has moved one point, the customer will have use 10 thousand cubic feet of gas.
3. The third dial is the 10 thousand dial and is read counterclockwise and this dial will move one point when the one (1) thousand dial has made one complete revolution. When this dial has move one (1) point, the customer will have use one (1) thousand cubic feet of gas.
4. The fourth dial is the one (1) thousand dial and is read clockwise. When this dial moves one (1) point, the customer will have used 100 cubic feet of gas.



The bottom dial is not read. It is the test dial and is used to test the meter for accuracy and this dial is also used to test your house lines for leaks. This dial is either a two (2) foot or five (5) foot dial. **If the pointer is between two figures, read the lowest figure.**

In order to illustrate how you read a meter, use the meter dials on the opposite page.

Start with the dial at the left for the 1/15 date and read the last number passed by the hand, in this case one (1). Read the second dial as nine (9), because the hand is between 9 and 0. In the same way, the next dial reads at eight (8). The last dial is read as eight (8).

The dials from left to right read 1988.

The 2/15 reading is 2345.

You can determine the consumption by subtracting the first reading, 1988 from the second, 2345 you get 357, which is the number of units of 100 cubic feet each, or 35,700 cubic feet of gas you have used, or 35.7 MCF which is as it appears on your bill.